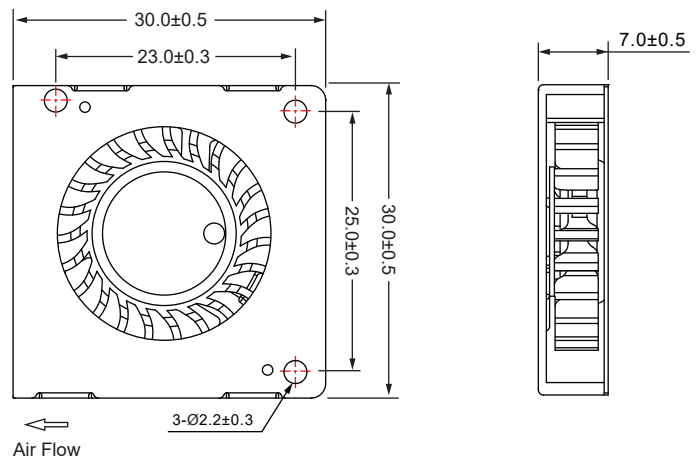


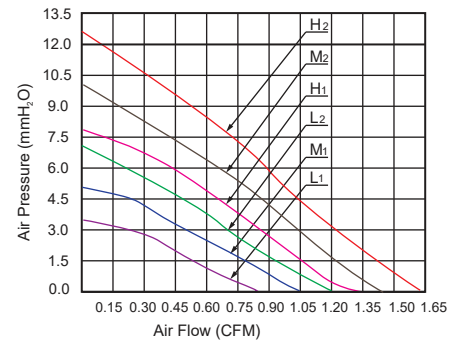
DC Blower Fan 30x30x07mm

■ 尺寸图 (DIMENSION DRAWING)



Unit:mm

■ 风压&风量曲线图 P and Q CURVE



- * 轴承类型: 液压轴承
(Bearing type:Hydraulic)
- * 材料(Material):
扇叶(Impeller):PBT
框(Frame):PBT & Stainless Steel
- * 引线(Lead wire):
UL1061 AWG #28 or equivalent
红色线正级 Red Wire Positive (+)
黑色线负级 Black Wire Negative (-)
- * 可选择增加风扇功能(Functions are optional)
- * 重量(Weight):6.4g

| 型号 Model | 轴承类型 Bearing Type | 电压 Rated Voltage | 电压范围 Operation Voltage | 电流 Current | 功率 Input Power | 转速 Speed | 风量 Air Flow | 风压 Static Pressure | 噪音 Noise Level |
|-------------|-------------------------|------------------------|------------------------------|---------------|-------------------|-------------|----------------|-----------------------|-------------------|
| | | VDC | VDC | Amp | Watt | RPM | CFM | MM-H ₂ O | dBA |
| BF3007L05SH | Hydraulic | 5V | 4.5~5.5 | 0.10 | 0.50 | 5,500±10% | 0.80 | 3.30 | 18.0 |
| BF3007M05SH | Hydraulic | 5V | 4.5~5.5 | 0.11 | 0.55 | 7,000±10% | 1.05 | 5.30 | 22.7 |
| BF3007H05SH | Hydraulic | 5V | 4.5~5.5 | 0.15 | 0.75 | 8,500±10% | 1.30 | 7.70 | 27.7 |
| BF3007L12SH | Hydraulic | 12V | 10.8~13.2 | 0.04 | 0.48 | 8,000±10% | 1.20 | 7.00 | 26.3 |
| BF3007M12SH | Hydraulic | 12V | 10.8~13.2 | 0.08 | 0.96 | 9,500±10% | 1.50 | 9.80 | 30.7 |
| BF3007H12SH | Hydraulic | 12V | 10.8~13.2 | 0.12 | 1.44 | 11,000±10% | 1.60 | 12.50 | 33.7 |

- * 以上为额定电压下的常规参数(All readings are typical values at rated voltage)
- * 规格如有变动不另行通知(Specifications are subjected to change without prior notice)